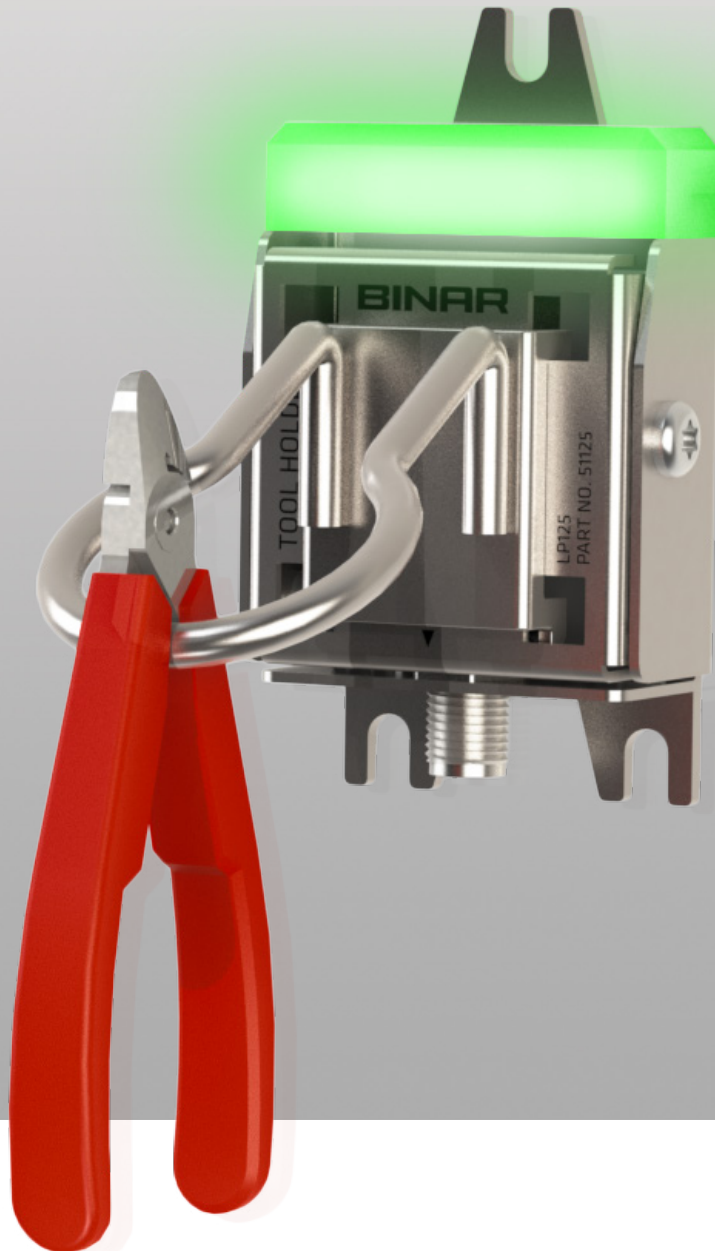


PRODUCTION SYSTEMS

# LP125 Smart Tool Holder

*Robust and flexible – ideal for industrial applications*

- Indicates when the tool needs to be used and confirms that it has been used
- In compliance with 5S and Poka Yoke
- Compatible with standard tool hooks
- Can also be used in combination with Pick to Light



**New!**

**BINAR**

*Improving your productivity*

# Smart Tool Holder

An organized work space is a vital part of Lean Production. Lack of order results in the operator constantly searching for tools or wondering which tool needs to be used, taking up valuable time and energy.

In compliance with 5S and Poka Yoke, Binar has developed the the product, Tool Holder, offering functionality that is as simple as it is ingenious. In accordance with quality assurance procedures, the Tool Holder states when the tool needs to be used and ensures that it has been used. To avoid the tool being lost, accompanying the product along the line, or being taken away by the operator by mistake, the system also monitors that the tool is placed back on the holder.

The Tool Holder is located right beside the work station to ensure the tools are always readily available when they need to be used. Standard tool hooks can be adapted to suit different tools. The built-in indicator light issues a clear green/red signal. A standard connector is available for safe, simple connection to a control system.



## TECHNICAL DATA

Part No.	51125
Power Supply	20 - 32VDC
Power Consumption	max 40mA
Load Range	min 100g - max ca 1.5kg
Communication	I/O
Connector	M12, 4-pin, Male, A code
CE	EN 61000-6-4 & EN 61000-6-2
IP Code	IP20
Temperature Range	0 - 50°C
Humidity	0 - 95% non-condensing
Dimensions	b 70 x h 110 x d 40mm
Weight	325g
Mounting	Wall-mounted, 3xM6

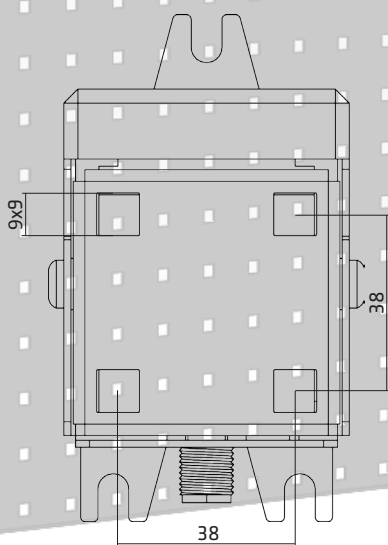
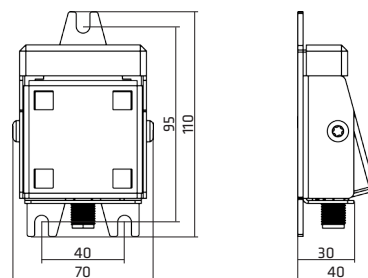
## CONNECTORS

### POWER SUPPLY

M12, 4-pin, Male, A code



PIN	Signal
1	+24V
2	IN
3	0V
4	UT



### Which tool hooks can I use?

It's compatible with standard tool hooks that are available for the most common tool boards - boards with square holes 9x9mm and cc 38mm. Make sure that the tool hangs properly and is easy to grip. Choose a hook with enough leverage for the Tool Holder to assume a fully lowered position when the tool is hanging on the hook, and just the right weight to ensure the holder flips back fully when the tool is used.

\* See accessories on the last page

# APPLICATION EXAMPLE

## TOOL HOLDER

Adjust the Tool Holder to ensure it assumes a raised standby position. Also ensure the holder reaches the lowered position when the tool is hung on it. A Green light will indicate when the tool needs to be used. When the operator takes the tool, the holder flips back to the raised position and the sensor issues a signal.

The indicator light is only turned off when the tool is placed back on the hook. This makes it easier to return the tool to the right place and reduces the risk of the tool being lost.



## PICK TO LIGHT

Adjust the Tool Holder to ensure it assumes a lowered standby position. A Green light indicates when the item should be picked. When it's picked, the arm is lifted and the sensor issues a signal. When it has been picked, the holder returns to the lowered position. Ideal for picking O-rings or similar.

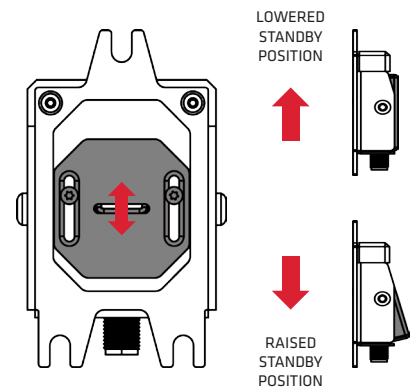


FUNCTION				
INPUT	OUTPUT		SWITCH	LIGHT INDICATION
0	0	The tool is hanging on the holder and must not be used*	ON	
			OFF	
1	0	Indicates that the tool needs to be used	ON	
			OFF	
1	1	The tool is used when instructed	ON	
			OFF	
0	1	The tool is used without it being instructed	ON	
			OFF	

\* Equivalent to Pick to Light. In that case, the word 'tool' is replaced by the word 'part', and the word 'used' is replaced by the word 'picked'.

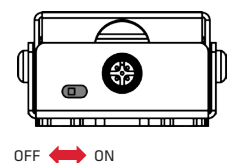
### Tool weight?

Adjust the holder to ensure it flips back fully when the tool is used and that it is firmly in the lowered position when the tool is hanging on it.



### Red light?

If you don't want the Red light to show, turn it off using the switch.



# ACCESSORIES

## TOOL HOOKS



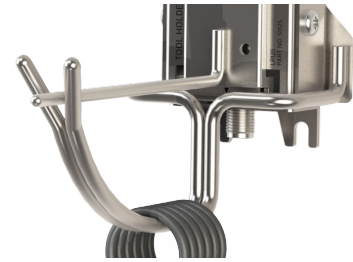
Ring  
Part No. 35609

Hook  
Part No. 35610

### Different tool?

Binar can produce customised hooks and brackets on request. Contact Binar for more info.

## PICK TO LIGHT



PART NO.	DESCRIPTION
35571	Complete set with an arm and parts holder

## I/O CABEL

M12 Female - M12 Male

PART NO.	DESCRIPTION
50134	0,5m
50133	1m
50130	2m
50131	5m
50132	10m
50135	15m



### Watch the movie?

To learn more, check out the Tool Holder movie. It's available at [binarelektronik.se](http://binarelektronik.se)

Follow us on:



DISTRIBUTOR

### Binar Elektronik AB

Box 2001 • SE-461 11 TROLLHÄTTAN • Sweden  
phone +46 (0)520 47 32 00 • fax +46 (0)520 47 32 10  
email [info@binar.se](mailto:info@binar.se) • website [www.binarelektronik.se](http://www.binarelektronik.se)

2017-08-30 ver 1.00 eng



**BINAR**  
Improving your productivity